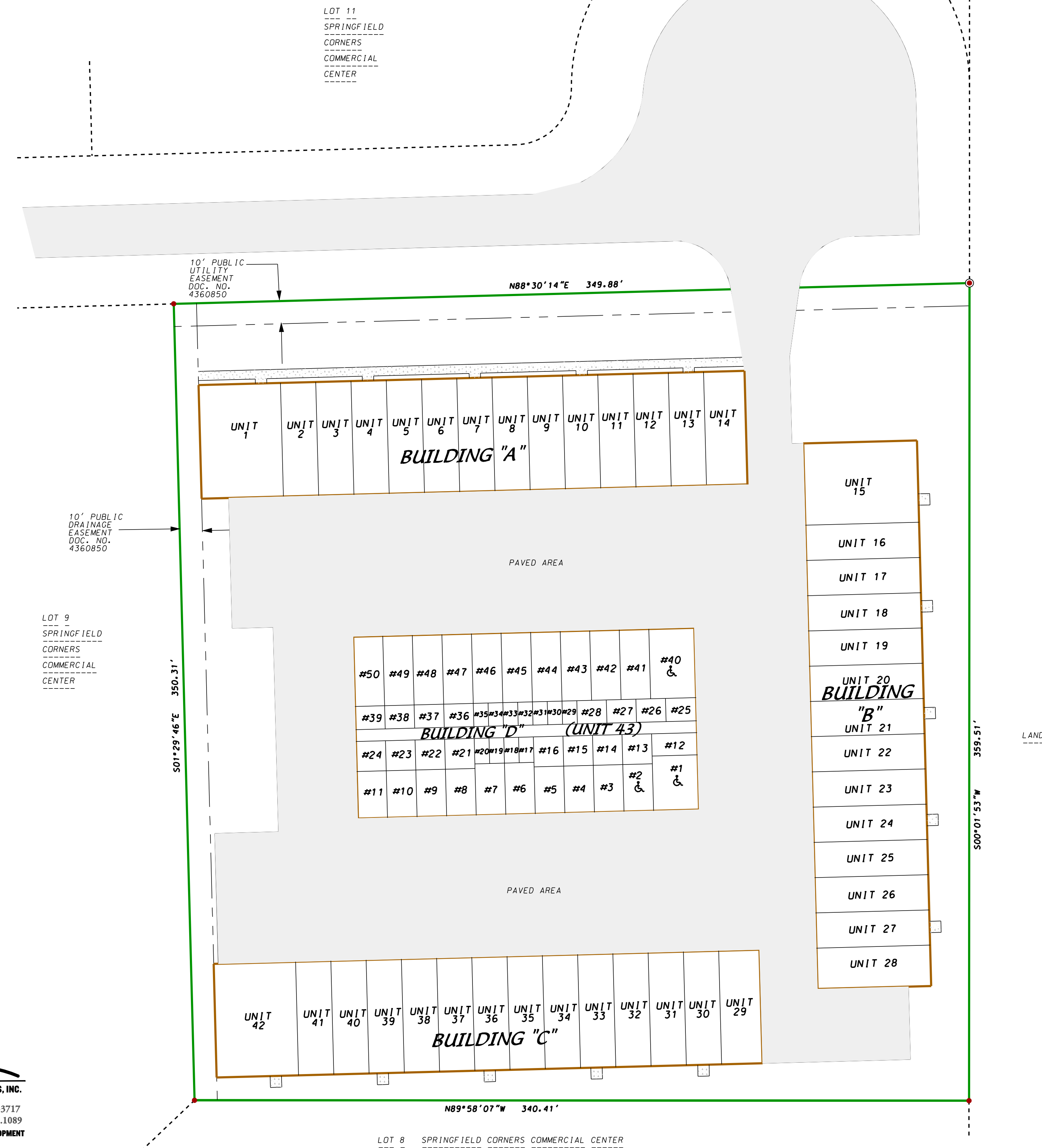


SPRINGFIELD STORAGE CONDOMINIUM

A CONDOMINIUM PLAT
TOWN OF SPRINGFIELD, DANE COUNTY, WISCONSIN

SALES MAP



NOTE:

1. All of the condominium except the units is a common element.

LEGEND

- FOUND 3/4" SOLID ROUND IRON STAKE
- FOUND 1-1/4" SOLID ROUND IRON STAKE

LEGAL DESCRIPTION

Lot 10, Springfield Corners Commercial Center, recorded in Volume 59-040A of Plats on Pages 195-197 as Document Number 4360850, Dane County Registry, located in the NE 1/4 of the NW 1/4 of Section 9, T8N, R8E, Town of Springfield, Dane County, Wisconsin. Contains 122,473 square feet (2.81 acres).

